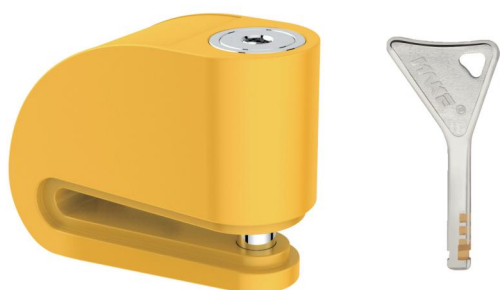

MK619 Motorcycle Lock

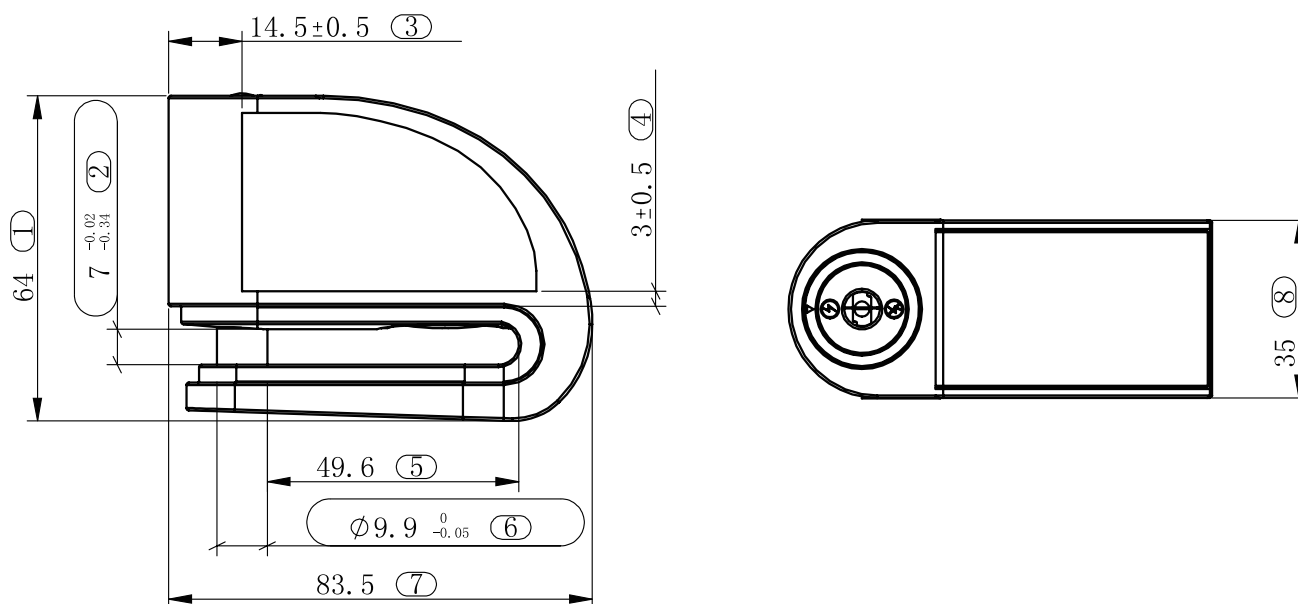


1. Feature



Material	Zinc Alloy lock body, brass cylinder, SS locking pin
Finished	Powder coating
Color	Yellow
IP	IP55
Voltage	3V
Power supply	1*CR2 battery
Alarm	100-110dB
Working Temperature	-20°C~65°C
Working Humidity	5%~95%
Mode	Alarm & None alarm
Locking Pin Diameter	5mm/7mm/10mm
Application	Motorcycle/Bike/Scooter

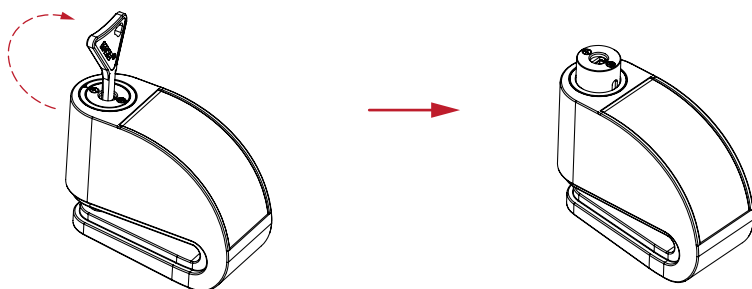
2. Drawing (Unit:MM)



3. Operation

Unlock

Insert the key and turns 180 ° clockwise, the cylinder will pop out; then rotate back the key until it stops, and pull out the key.



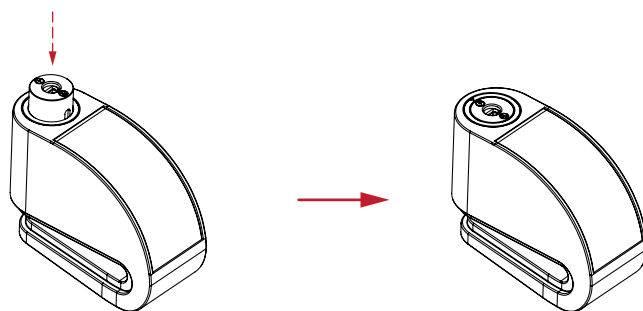
Lock

① Alarm Mode

Use hand to rotate the cylinder until the symbol “⚡” Stop at the symbol “▽” and then push the cylinder inside. It is locked with alarm.

② None Alarm Model

Use hand to rotate the cylinder until the symbol “⊗” Stop at the symbol “▽” and then push the cylinder inside. It is locked without alarm.



4. Alarm&Pre-alarm

Pre-alarm

Under the alarm mode, shaking the lock less than 5 s, it will have 2 sound “Bi, Bi”.

Alarm

Under the alarm mode, If continually shaking the lock more than 5 s, it will continually alarm 15 s.

How to clear alarm

- ① After alarm for 15 s, it will stop if no further shaking.
- ② Using the right key to unlock, when the cylinder pop-out, it will stop alarm.

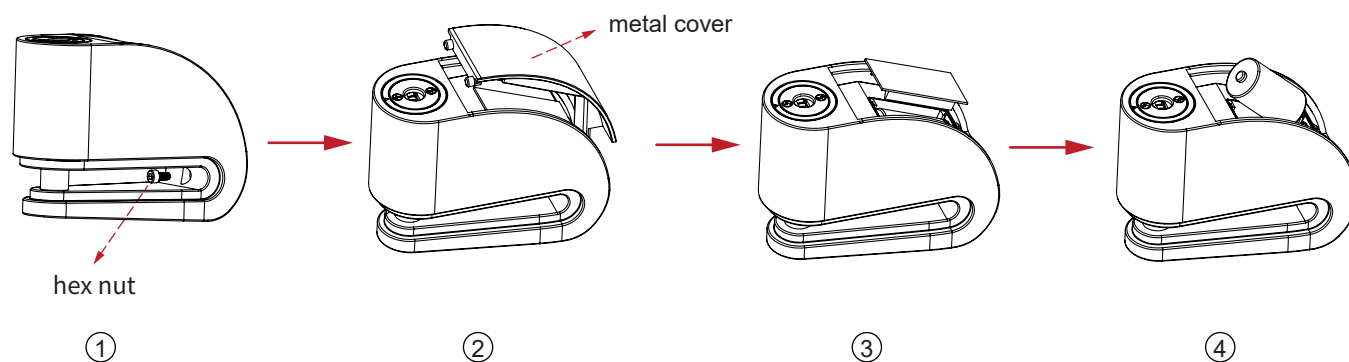
5. Battery

Low power notice

When it is in low power, there is a sound of “Di~Di~Di” if unlock. After the low power notice, it can be used for 15 times in alarm mode. Please change the battery as soon as possible.

How to change battery

- ① Firstly, find out the fixing screw as below picture showed
- ② Use the 2mm screwdriver to release the screw
- ③ Take out the metal cover and the battery cover
- ④ Take out the battery, and then install a new battery. Fix the battery cover and metal cover.



6. Application

